

# Boston Psychoanalytic Society and Institute



## Hanns Sachs Library and Archives Newsletter

VOLUME 13, NUMBER 2

FALL, 2013

### DIRECTOR OF LIBRARY

Dan Jacobs, MD

### DIRECTOR OF ARCHIVES

Sanford Gifford, MD

### LIBRARIAN

Olga Umansky, MLS

### LIBRARY

#### COMMITTEE

Ellen Goldberg, PhD

Malkah Notman, MD

Rita Teusch, PhD

Shari Thurer, ScD

Marcia Smith-Hutton,  
LICSW, BCD

Anna Wolff, MD

### MANAGING DIRECTOR

Carole Nathan, MBA

### FINANCIAL OFFICER

Pharrel Wener

BOSTON  
PSYCHOANALYTIC  
SOCIETY AND  
INSTITUTE

169 Herrick Road  
Newton, MA 02459

617 · 266 · 0953

## From the Director

Dan Jacobs, MD

The chapel, in what is now Colby Hall, will be the new home of the Hanns Sachs Library. Custom built book cases will rise toward an arched ceiling; windows will bring light and color into the reading room. There will be corners in which to read, tables for study, a computer for searches, and, of course, the presence of our talented librarian Olga Umansky and her assistant

Tyler Wimberly. These features and more will no doubt make ours the most beautiful and user friendly psychoanalytic library in the country. If you have suggestions for what you would like to see in our newly designed library, please let me know. For all those who have worked so hard to help make this dream a reality, thank you.

## Colby Hall History

*"A real building is one on which  
the eye can light and stay lit."*

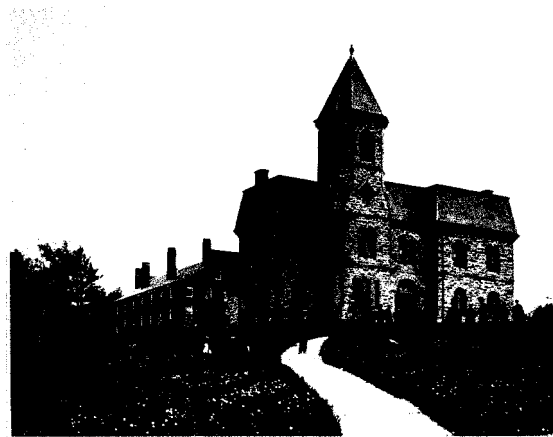
*-Ezra Pound*



*Sketch by Schwartz / Silver Architects*

The process has started to design our permanent home. It will include a spacious library on the 1st floor and a climate controlled archive. The Library Committee is working closely with our architects to make sure all library needs are met. We heard your voices and are dedicated to creating a beautiful space where people can be both "alone and together". Once again, our books and manuscripts will have a home.

Colby Hall is believed to have been first occupied circa 1865-66, with some records suggesting the laying of its cornerstone may have coincided with President Abraham Lincoln's second inauguration. It is named for Boston industrialist and Newton Centre resident Gardner Colby, a long-time treasurer and benefactor of Newton Theological Institution, Brown University, and Colby College in Waterville, ME.



*Colby Hall, circa 1870*

## In the Library

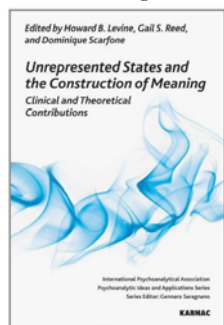
It has been a year since we settled in our temporary quarters. Our Newton address attracted new readers and researchers. Four new patrons joined as library members. Over time, colleagues began to increase their use of electronic resources and to develop an appreciation of our audio archives.

People come and work in the library: they download current journals not covered by PEP, and browse our growing collection of books and periodicals. If we do not have the psychiatric and psychotherapy journal they want, we can always obtain it through the interlibrary loan. One of our new web initiatives is to include in next year's syllabi direct links to PEP Web and online journals. As you may have noticed, our website has been redesigned and integrated with bpsi.org.

All **Library** pages are accessible via the web site navigation menu and include: an online **Catalogue** that you can search from home, **Resources** where you can browse our current journal collection online, **Services** where you can pay for articles, loans, and bibliographic searches online; **Library News and Events** where book events are announced; updated **Book Sale** and wish lists and links to the **Archives** collection. Also in the library's care are the two new sections, **BPSI Authors** and **Our Recent Work**, featuring the latest publications by our members. If you have recently published a book or an article, please send a reference to Olga Umansky at [library@bps.org](mailto:library@bps.org).

## Meet the Author Series

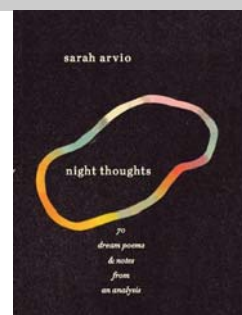
On **Monday, Oct 21, 2013**, Howard B. Levine will talk about a new book *Unrepresented States and the Construction of Meaning: Clinical and Theoretical Contributions*, Karnac Books, 2013, which he co-edited with Gail S. Reed, and Dominique Scarfone. Freud's initial formulations continue to serve well in understanding and treating neurosis and the more



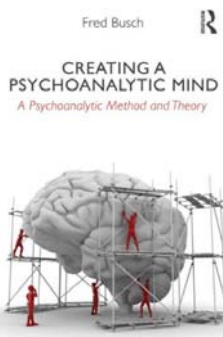
organized parts of our patients' minds. However, analysts have been increasingly presented with patients whose difficulties and level of psychic functioning lie beyond neurosis. In these instances, rather than uncovering organized but disguised or hidden conflicts, fantasies, wishes and compromise formations, patient and analyst must work together to strengthen or create psychic structure that was previously weak, missing, or functionally inoperative. This book, dedicated to the memory of the late Andre Green, offers a psychoanalytic understanding and approach to the intersubjective creation of meaning and mind and the treatment of primitive mental states.

On **Tuesday, Nov 19, 2013**, Sarah Arvio, an award-winning poet from Maryland, will visit our library to talk about her new book *Night Thoughts: 70 dream poems & notes from an analysis*, Knopf, 2013, a first person account of a dream analysis. This book presents a set of dream poems, along with a narrative exploration of the

figures and images in the dreams. Reminiscent of Freud's "Dora"—but from the perspective of the patient as artist, rather than that of the analyst—"night thoughts" is an unflinchingly courageous literary account of repression and the fracturing of the self, and of healing through dreaming and free-associating. Mark Strand, winner of the Pulitzer Prize and former Poet Laureate of the United States, has called this book "a garden of images . . . beautiful, painful and heroic."



On **Tuesday, Apr 1, 2014**, Fred Busch will present his new book *Creating a Psychoanalytic Mind: A Psychoanalytic Method and Theory*. New York: Routledge, 2013. Bringing a fresh contemporary Freudian view to a number of current issues in psychoanalysis, this book is about a psychoanalytic method that has been



evolved by Fred Busch over the past 40 years. It is based on the essential curative process basic to most psychoanalytic theories - the need for a shift in the patients' relationship with their own mind. Busch shows that with the development of a psychoanalytic mind the patient can acquire the capacity to shift the inevitability of action to the possibility of reflection.

## In the Archives



### Lifetime Contribution to BPSI Award

The first and newly created award for Lifetime Contribution to the Boston Psychoanalytic Society and Institute was given to Dr. Sanford Gifford, a valued member, a prolific writer, and an internationally recognized historian of psychoanalysis. Dr. Gifford served as Director of the Hanns Sachs Library from 1966 to 2000 and has remained Director of Archives since then. He has been devoted to expanding our archival collection and making it available to scholars around the world.

Dr. Gifford received his award at the BPSI's graduation ceremony on May 31, 2013. With an art history degree from Harvard University, Dr. Gifford went on to study medicine at Northwestern University in Chicago. He worked at the Colorado Springs Psychopathic Hospital, completing his residency at the Mount Sinai Hospital in San Francisco. When World War II broke out and psychiatrists were needed in the army, Sanford Gifford trained at the School of Military Neuropsychiatry at Lawson General Hospital in Atlanta. Deployed to the psychiatric hospital in Manila, he treated soldiers with combat neuroses (what was later called PTSD) for three years. This experience was formative in Gifford's life-long commitment to war veterans and his later social activism. After the war, in the summer of 1946, Dr. Gifford and his wife Ingrid, also a doctor, travelled to Boston where they met Edward and Grete

## Honoring Sanford Gifford, MD

Bibring at a friend's party in Cambridge. The Bibrings, Helene Deutsch, and Jock Murray introduced Sanford Gifford to psychoanalytic training at BPSI. At the same time, he started his career at the VA hospital, treating patients and conducting studies in psychosomatic medicine and the psychology of twins with Henry M. Fox and Arthur F. Valenstein. A founder of the BPSI Oral History project, Dr. Gifford has been recording conversations with noted psychoanalysts and their relatives for over forty years. Even in retirement he continued teaching at the Harvard Medical School, working at the West Roxbury VA hospital, and chairing the History and Archives Committee of the American Psychoanalytic Association. He is the author of numerous publications.

### The First Gifford Stipend for Archival Study

The Hanns Sachs Library and Archives is pleased to announce a stipend of \$500 to be awarded to an undergraduate or graduate student or BPSI member who is researching a paper with the possibility of publication based on materials in the BPSI Archives. This award is part of BPSI's academic outreach, made possible by the generous donation of Dr. William Ackerly. If you are interested in being a recipient of this stipend, please write a letter supported by a statement of purpose, to the attention of Dan Jacobs, MD, Director of Library and the Library Committee of the Hanns Sachs Library and Archives. You can email your letter to [library@bpsi.org](mailto:library@bpsi.org).

### Sanford Gifford's Selective Bibliography

1. Fox, H.M and Gifford, S (1953) *Psychological Responses to ACTH and Cortisone: A Preliminary Theoretical Formulation*. *Psychosomatic Medicine*, 15:614-631.
2. Fox, H.M. Rizzo, N.D., and Gifford, S. (1954) *Psychological Observations of Patients Undergoing Mitral Surgery: A Study of Stress*. *Psychosomatic Medicine*, 16:186-208.
3. Gifford, S. (1957). *Transient Disturbances in Perception: Two Psychoanalytic Observations*. *Journal of the American Psychoanalytic Association*, 5:108-114.
4. Gifford, S. (1960). *Sleep, Time, and the Early Ego—Comments on the Development of the 24-Hour Sleep-Wakefulness Patterns as a Precursor of Ego Functioning*. *Journal of the American Psychoanalytic Association*, 8:5-42.

(continued on page 6)

## In the Archives

Laura D. Crain, MD

### Sanford Gifford and Physicians for Social Responsibility

Sanford Gifford is a scholarly antiwar activist. With his vast knowledge of history and psychoanalytic theory as a foundation, he has immersed himself both in understanding the experiences of soldiers and conscientious objectors in clinical practice, as well as in hours of in-depth conversation with colleagues about the causes and consequences of war in society. He shared some of his own writing and thinking about the unconscious and conscious motivations of war in his talk given at BPSI in 1987 entitled "Freud, Pessimist or Realist: Further Reflections on the Death-Instinct." Regarding the repetition of war throughout history, Dr. Gifford characterized Freud as a reluctant pessimist regarding the question of whether civilization could ever really become sophisticated enough to abandon warfare. Dr. Gifford may well share such reluctant pessimism, but this did not deter him from making important contributions in the antiwar effort throughout his career.

From 1943 to 1946, during his own military service where he acted as a psychiatrist, Dr. Gifford wrote reports regarding physically and psychologically wounded soldiers for the disposition board--the board that would decide which soldiers would be sent home for further treatment and which return to combat. In the detailed interviews that Dr. Gifford conducted with these soldiers, he made a very astute observation that is now considered central to understanding resiliency in veterans. He noted that the strongest positive emotion is their loyalty and devotion to their fellow fighting men.

I think a bit "tongue-in-cheek," Dr. Gifford remarked that he was critiqued for his compassion and careful evaluation of his soldier patients. He was thought to have "too lenient an attitude toward psychoneuroticism present in the soldiers," and was seen as too often recommending that the psychologically wounded soldiers not be returned to battle.



*Photograph by Allen Palmer, M.D.*

Years later, Dr. Gifford's passionate antiwar sentiments led him to join the Physicians for Social Responsibility. Dr. Gifford was one of a number of Boston physicians who first met in PSR's founder, Dr. Bernard Lown's, living room in Boston. In 1962, there were 111 members of PSR of whom 21 were psychoanalysts. Dr. Gifford was one of a group of members who split off, led by Dr. Charles Magraw, specifically to organize support efforts for the Bach-Mai hospital in Viet Nam. Dr. Gifford was proud of the more activist emphasis of this so-called "Bach-Mai group" which encouraged membership and leadership of non-MD members of the analytic community.

Part of Dr. Gifford's psychiatric practice was devoted to interviewing conscientious objectors and to writing letters in support of their objection to being drafted, something that he felt quite privileged to be able to do. He also worked part-time at the West Roxbury VA Hospital.

Today, Dr. Gifford reflects back and wonders how with his busy practice, family, lectures and other teaching obligations, he found time to meet week after week for many years with colleagues in PSR and the Bach-Mai group. He thinks he found it to be inspiring to be part of a group that believed in the importance of peace. Dr. Gifford's generosity in his contributions to the anti-war effort are inspiring to us all.

## In the Archives

**Olga Umansky, MLS**

### Collaboration with MSPP

The Library Committee is devoted to encouraging archival research and publication. Toward that end, on May 7th, committee members visited the Massachusetts School of Professional Psychology (MSPP) to discuss future collaboration between psychology students and BPSI Archives. Collections of Grete Bibring, Arthur Valenstein, the Putnam Children Center, and Lora Tessman were highlighted as materials that might be the bases for future papers and dissertations. Both organizations hope to review and critique earlier clinical studies, to compare research methods of the past and present and to make students aware of Boston's unique history in the field of child development research. Following our May meeting, Dr. Lionel Joseph, PhD, PsyD, Managing Director of the Brenner Center, discussed the proposed collaboration with MSPP core faculty. The faculty fully endorsed the collaboration. We would like to thank Dean Allen Beck, Lionel Joseph, PhD, PsyD, and Terrie Burda, PsyD, Professor of Projective Testing, as well as BPSI members, Ellen Goldberg, PhD, Dan Jacobs, MD, and Malkah T. Notman, MD for beginning this fruitful dialog.

As part of this effort to promote archival study, Ellen Goldberg, PhD, Clinical Psychologist and BPSI member, and Olga Umansky are working with the Murray Research Archives at Harvard to review materials from the Psychological Aspects of Pregnancy, 1957-1962, led by Grete L. Bibring. While three articles were published by Grete Bibring, Thomas, Dwyer, Dorothy Huntington, and Arthur Valenstein summarizing the study in the *Psychoanalytic Study of the Child* in 1961, the test data can be re-evaluated in today's standards. Funded partially by NIMH, US Public Health Service, the pregnancy study was carefully designed by a multidisciplinary team. Dr. Goldberg plans to use "Bibring Revisited" as a basis for future research of pregnancy related topics.

### Lora Tessman's Interview

On August 15th, Olga Umansky and Ellen Goldberg interviewed our member Lora Heims Tessman, PhD, about her work and clinical studies at the Judge Baker Children's Center reflected in the

papers recently donated to BPSI Archives. This new collection will be processed in the fall.

### Visit to WGBH Archives

The archivists at the WGBH Archives contacted our archives with the proposal for BPSI to curate their Psychology One video collection and an interview of Dr. Grete Bibring with Oliver Cope recorded in 1973. WGBH historic programs are currently being digitized and can benefit from historical and biographical materials available at BPSI Archives. DVDs with sample episodes are available on loan from our library. Psychologists interested in history and willing to participate in this project are welcome to contact [library@bpsi.org](mailto:library@bpsi.org) for details.

### Grete Bibring's Biography

The work on the manuscript continues. We hope to finish writing by this fall and self-publish first copies with the help of the American Psychoanalytic Foundation grant of \$2,500 received last winter. Because Grete was known for her dinner parties, our archives contain notebooks in which she listed her dinner guests and menus. Her granddaughters shared family stories and new recipes in Grete's own hand.

### Recent Archival Projects

**Corinne Anderson, MLS**, an intern from Simmons College, finished digitizing and organizing over 250 Scientific Meeting Papers in the spring. Corinne graduated from Simmons with the MLS degree in May. She also holds a BA in English from the University of Portland. You can see a detailed description of [this collection](#), accompanied by a keyword index and information about respective sound recording in the Archives section of our web site.

**Nathalie N. Neata, MLS**, Library Assistant, finished processing a large archive of Dr. Arthur Valenstein's papers. Nathalie started in our archives as an intern in the spring of 2012, helped us move to a new home, and continued working on the library and archival projects throughout the 2012-2013 academic year. Dr. Valenstein's collection includes personal and professional correspondence, study reports, biographical materials, military records, manuscripts, and photographs.

## Recommended Reading

This is a new section of our newsletter devoted to highlighting articles and books that our members have found particularly interesting. If you would like to make a recommendation, contact Olga Umansky at [library@bps.org](mailto:library@bps.org)

The 50 minute hour, for many, is a thing of the past. Sessions of forty-five minutes or less have been substituted. Greenson's brief paper comments on this change. It is worth re-reading his exploration of the amount of the time we allot each patient and the time in between patients that we give ourselves.

Greenson, R. (1974) *The Decline and Fall of the 50-Minute Hour*. Journal of the American Psychoanalytic Association, 22:4, 785-791.

~recommended by Dan Jacobs, MD

(continued on page 7)

## In the Library

### Book Sale

Our "book store" is back! Browse the shelves of the glass door cabinets behind the large table in the library or check



the [online list](#) for amazing bargains on psychoanalytic classics. All hardcover books are just \$5 each, paperbacks - \$2 each. Also on sale is a complete Standard Edition set of Freud's works. Please contact Olga Umansky at 617-266-0953 ext. 104 for details.

## Bibliography

(continued from page 3)

5. Fox, H.M., Murawski, B.J., Bartholomay, A.F., and Gifford, S. (1961) *Adrenal Steroid Excretion Patterns in Eighteen Healthy Subjects: Tentative Correlations with Personality Structure*. Psychosomatic Medicine, 23:33-40.

6. Gifford, S. (1964). *Repetition Compulsion*. Journal of the American Psychoanalytic Association, 12:632-649.

7. Gifford, S., Murawski, B.J., Brazelton, T.B., Young, G.C. (1966). *Differences in Individual Development Within a Pair of Identical Twins*. International Journal of Psycho-Analysis, 47:261-268.

8. Valenstein, A.F., Gifford, S., Tartakoff, H.H. (1978). *Grete Leber Bibring—(1899–1977)*. The International Journal of Psycho-Analysis, 59:533-534.

9. Gifford, S. (1980). "The Prisoner of Time": *Some Developmental Aspects of Time Perception in Infancy, Sensory Isolation, and Old Age*. The Annual of Psychoanalysis, 8:131-154.

10. Gifford, S. (1983). *Helene Deutsch—1884-1982*. Psychoanalytic Quarterly, 52:427-431.

11. Gifford, S. (1983). *Sanford Gifford*. American Imago, 40:3-10.

12. Gifford, S. (1985). 'Repression' or Sea-Change—*Fenichel's Rundbriefe and the 'Political Analysts' of the 1930's*. The International Journal of Psycho-Analysis, 66:265-271.

13. Ablon, S.L., Harrison, A.M., Valenstein, A.F., Gifford, S. (1986). *Special Solutions to Phallic-Aggressive Conflicts in Male Twins*. Psychoanalytic Study of the Child, 41:239-257.

14. Gifford, S. (1986). *The First Relationship: By Daniel Stern*. Cambridge, Mass.: Harvard University Press, 1977, 160 pp., \$8.95 (paperback, \$3.95). Journal of the American Psychoanalytic Association, 34:225-227.

15. Gifford, S. (1990). *Freud. A Life for our Time: By Peter*

## Sanford Gifford, MD

*Gay*. New York: W. W. Norton. 1988. pp. 810 + xx. Int. R. Psycho-Anal., 17:376-381.

16. Gifford, S. (1994). *Abduction: Human Encounters with Aliens: By John E. Mack*. New York: Scribner, 1994, 433 pp., \$22.00. Journal of the American Psychoanalytic Association., 42:1290-1298.

17. Gifford, S. (1995). *In Defense of Schreber: Soul Murder and Psychiatry. : By Zvi Lothane*. Hillsdale, NJ: Analytic Press. 1992. Pp. 550. The International Journal of Psycho-Analysis, 76:193-196.

18. Gifford, S. (1998). *Marie Briehl and Rosetta Hurwitz: Lay Analysts and American Psychoanalysis*. Psychoanalytic Review, 85:41-50.

19. Gifford, S. (1998) *The Emmanuel Movement: (Boston, 1904-1929): The Origins of Group Treatment and the Assault on Lay Psychotherapy*. Boston: Distributed by the Harvard University Press for the Francis Countway Library of Medicine.

20. Gifford, S. (2001). *Authorship of an Adolescent Diary, 1900-04: Helene Deutsch or Christine Olden?*. Journal of Clinical Psychoanalysis, 10:293-298.

21. Gifford, S. (2003). *Freud and the seduction theory: A brief love affair*. By Kurt R. Eissler. New York: International Universities Press. pp. 520, 2001. The International Journal of Psycho-Analysis, 84:187-192.

22. Gifford, S. (2003). *Émigré Analysts in Boston, 1930-1940*. International Forum of Psychoanalysis, 12:164-172.

23. Gifford, S. (2007). *Putnam Camp: Sigmund Freud, James Jackson Putnam, and the Purpose of American Psychology. By George Prochnik*. New York: Other Press, 2006, 455 pp., \$29.95. Journal of the American Psychoanalytic Association., 55:1417-1423.

## Recommended Reading

Bibring, Grete L., and Kahana, Ralph J. *Lectures in Medical Psychology; an Introduction to the Care of Patients*. New York: International Press, Inc., 1968.

This book by Drs. Bibring and Kahana, eminent BPSI members of old, is as useful as ever, bringing a developmental point of view to the various personality issues that have to be mastered for optimal medical management. The chapters are:

- Adaptation, Adjustment and Personality
- Psychoanalytic Psychology as a Science
- Childhood Development. Personality Types, and Medical Management
- Puberty and Adolescence
- Adult Life
- Medical Psychotherapy

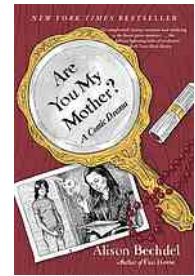
This collection of lectures is a treasure for clinicians of all levels of expertise.

~ recommended by Anna Wolff, MD

Bechdel, Alison. *Are You My Mother?: A Comic Drama*. Boston: Mariner Books, 2013.

*Are You My Mother?* is a compulsively readable, psychoanalytically-informed, memoir masquerading as a comic book. In it, Alison Bechdel, a brilliant, edgy, mother-hungry cartoonist, dissects her complicated relationship with her "good enough" mother. It reads like a psychoanalytic session with a relentlessly introspective patient -- with visuals. Marbled throughout are references to Freud, Winnicott, Alice Miller, Virginia Woolf, and other deep thinkers. It is apparent that Bechdel has become, in life, the artist her mother wishes herself to be. Originally best known for the long-running comic *Dykes to Watch Out For*, Bechdel came to critical and commercial success in 2006 with her graphic memoir about her father, *Fun Home*.

~ recommended by Shari Thurer, ScD



## In the Library

The following is a list of books recently acquired by, or donated to, the Hanns Sachs Library:

Akhtar, Salman (2012) *Between Hours: A Collection of Poems by Psychoanalysts*. London: Karnac Books.

Arvio, Sarah (2013) *Night Thoughts: 70 dream poems and notes from an analysis*. New York: Alfred A. Knopf [donated by author].

Bechdel, Alison (2013) *Are You My Mother?: A Comic Drama*. Boston: Mariner Books.

Berger, Brenda; Newman, Stephanie (2012) *Money Talks: in Therapy, Society, and Life*. New York. New York, London: Routledge.

Blackman, Jerome S. (2004) *101 Defenses: How the Mind Shields Itself*. New York, Hove: Brunner-Routledge.

Bollas, Christopher (2013) *Catch Them Before They Fall: The Psychoanalysis of Breakdown*. New York, London: Routledge.

Bromberg, Philip. M. (2011) *The Shadow of the Tsunami: and the Growth of the Relational Mind*. New York, London: Routledge.

Civitarese, Giuseppe (2013) *The Violence of Emotions: Bion*

## New Books

*and Post-Bionian Psychoanalysis*. New York: Routledge.

Felman, Shoshana; Laub, Dori. *Testimony: Crisis of Witnessing in Literature, Psychoanalysis, and History*. New York, London: Routledge.

Fuechtner, Veronika (2011) *Berlin Psychoanalytic: Psychoanalysis and Culture in Weimar Republic Germany and Beyond*. Berkley, Los Angeles, London: University of California Press.

Goldberg, Arnold (2012) *The Analysis of Failure: An Investigation of Failed Cases in Psychoanalysis and Psychotherapy*. New York, London: Routledge.

Green, Andre (2001) *Life Narcissism, Death Narcissism*. London, New York: Free Association Books.

Grosz, Stephen (2013) *The Examined Life: How We Lose and Find Ourselves*. New York, London: W.W. Norton and Company.

Hinshelwood, R.D. (2013) *Research on the Couch: Single-case studies, subjectivity and psychoanalytic knowledge*. London, New York: Routledge.

Kenny, Dianna T. (2012) *Bringing Up Baby: The Psychoanalytic Infant Comes of Age*. London: Karnac Books.

(continued on page 8)

## In the Library

(continued from page 7)

Kernberg, Otto F. (2012) *The Inseparable Nature of Love and Aggression: Clinical and Theoretical Perspectives*. Washington, DC: American Psychiatric Publishing.

Levine, Howard B.; Reed, Gail S.; Scarfone, Dominique, eds. (2013) *Unrepresented States and the Construction of Meaning: Clinical and Theoretical Contributions*. London: Karnac Books.

Loewenberg, Peter and Thompson, Nellie (2011) *100 Years of the IPA: The Centenary History of the International Psychoanalytical Association 1910-2010. Evolution and Change*. London: Karnac Books [donated by authors].

Mack, Karen; Kaufman, Jennifer (2013). *Freud's Mistress: a novel*. New York: G.P. Putnam's Sons.

Seulin, Christian; Saragnano, Gennaro, eds. (2012). *On Freud's "On Beginning the Treatment"*. London: Karnac Books.

Ogden, Benjamin H.; Ogden, Thomas H. (2013) *The Analyst's Ear and the Critic's Eye: Rethinking psychoanalysis and literature*. London, New York: Routledge.

Oliner, Marion M. (2012) *Psychic Reality in Context: Perspectives on Psychoanalysis, Personal History and Trauma*. London: Karnac Books.

Phillips, Adam (2012) *Missing Out: In Praise of the Unlived Life*. New York: Farrar, Strauss and Giroux.

Snyder, C.R.; Ingram, Rick E. (2000) *Handbook of Psychological Change: Psychotherapy Processes & Practices for the 21st Century*. New York: John Wiley and Sons.

Schore, Allan N. (2012) *The Science of the Art of Psychotherapy*. New York, London: W.W. Norton and Company.

Schwartz, Peggy and Murray (2011) *The Dance Claimed Me: A Biography of Pearl Primus*. New Haven, London: Yale University Press.

Shouba, Terryl K. (2012) *Conversations About Therapy: People Tell Their Stories*. St. Charles, Ill.: Marsh House Books.

Tuber, Steven; Caflich, Jane (2011) *Starting Treatment With Children and Adolescents: A Process-Oriented Guide for Therapists*. New York, London: Routledge.

## With Our Deepest Gratitude

We are grateful to our donors for their continuous support. Thanks to Gaston Blom, MD, Dan Jacobs, MD, and Alan Pollack, MD who donated very valuable psychoanalytic books to our library this spring. We always thank authors for contributing their recent publications to our collection. With the fund, generously established by Dr. and Mrs. Newman for our library, we continue building our child analysis and neuropsychology collections and can afford to subscribe to costly infant and adolescent psychotherapy journals. Our Gifford fund helps to purchase books on the history of psychoanalysis. We are very fortunate to live in a community of philanthropists and book lovers!

## Book Returns

Please remember that our loan period is one month and you need to call or email the library if you wish to keep materials longer. Your prompt return of books and CDs ensures that our patrons can always find the resources they need in the library. Thanks!

## BECOME A LIBRARY MEMBER

Those who are not BPSI members or students may join our library and get announcements of all BPSI programs for an annual fee of \$150. As a Library Member, you are entitled to borrow books, renew and reserve materials online, make book purchase recommendations, and use PEP Web and current journals in the library at no extra cost. For more information please call Olga Umansky at 617-266-0953 ext. 104 or email her at [library@bps.org](mailto:library@bps.org)

